



GAT MONTHLY MEMBERSHIP PROGRESS REPORT

Results as of: 9/30/2024

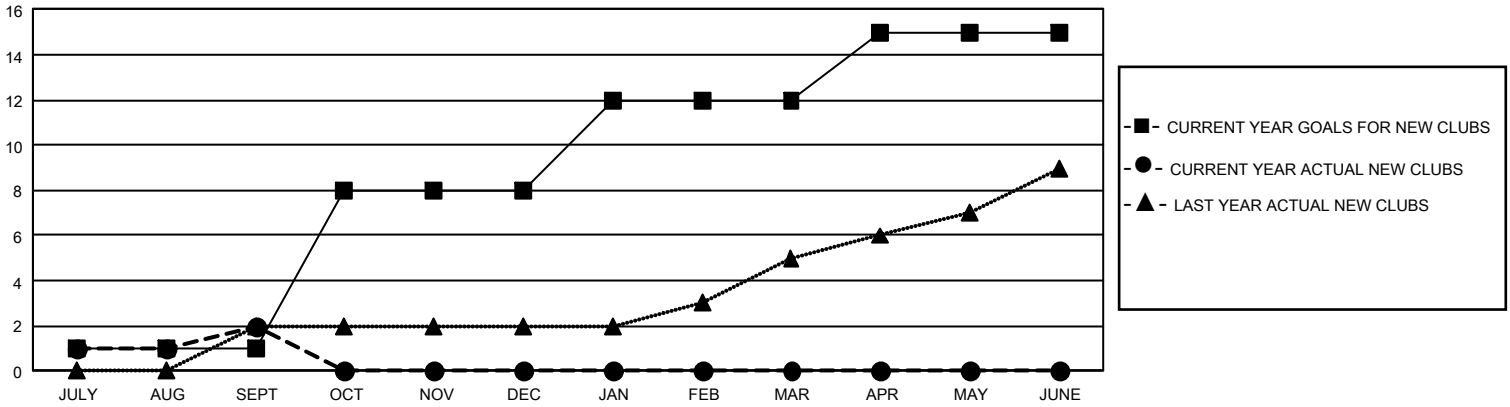
GMT Constitutional Area 5 - J, Group I

REPORT DOES NOT INCLUDE CLUBS IN UNDISTRICTED AREAS.

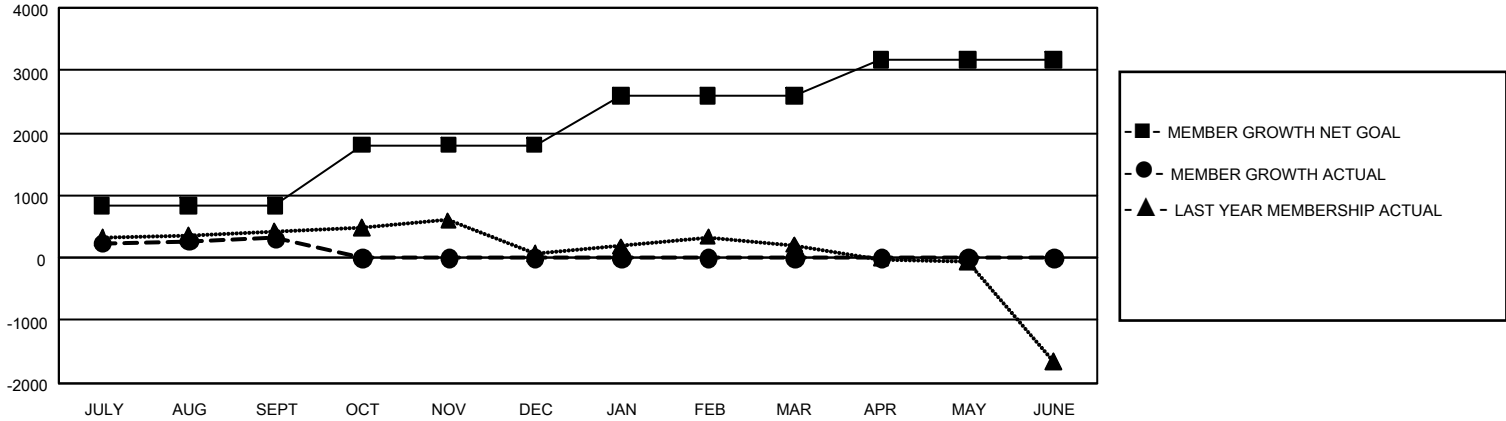
Clubs			
RESULTS FOR 2024-2025			
QUARTER	NEW CLUB GOAL	NEW CLUBS	DROPPED CLUBS
JULY/AUG/SEPT	3	2	1
OCT/NOV/DEC	21	0	0
JAN/FEB/MAR	12	0	0
APR/MAY/JUNE	9	0	0

Members			
RESULTS FOR 2024-2025			
QUARTER	MEMBER GROWTH NET GOAL	MEMBER GROWTH ACTUAL	DROPPED MEMBERS ACTUAL (including transfers)
JULY/AUG/SEPT	830	1,103	681
OCT/NOV/DEC	981	0	0
JAN/FEB/MAR	785	0	0
APR/MAY/JUNE	571	0	0

GOALS AND ACTUAL NEW CLUBS CUMULATIVE



GOALS AND ACTUAL MEMBERS CUMULATIVE



DROPPED CLUBS: 1	465 CLUBS OF 1,091 ADDED 1 OR MORE NEW MEMBERS	<u>GENDER DISTRIBUTION</u>	
		MALE 30,144 (78.70%) FEMALE 8,151 (21.28%) NON BINARY 0 (0.00%) PREFER NOT TO ANSWER 7 (0.02%)	
<u>DROPPED MEMBERS</u>		CLICK HERE FOR CUMULATIVE MEMBERSHIP DATA	TOTAL FAMILY UNIT MEMBERS 0
DECEASED 67 CLUB CANCELLED 0 OTHER 576 TOTAL 643			FAMILY MEMBERS PAYING HALF DUES 0